

<https://daikin-p.ru>

DAIKIN



DAIKIN

Marine type

Container Refrigeration Unit

Service Manual · Parts List

Optional Functions

Model

LXE10D-A3

DAIKIN INDUSTRIES, LTD.

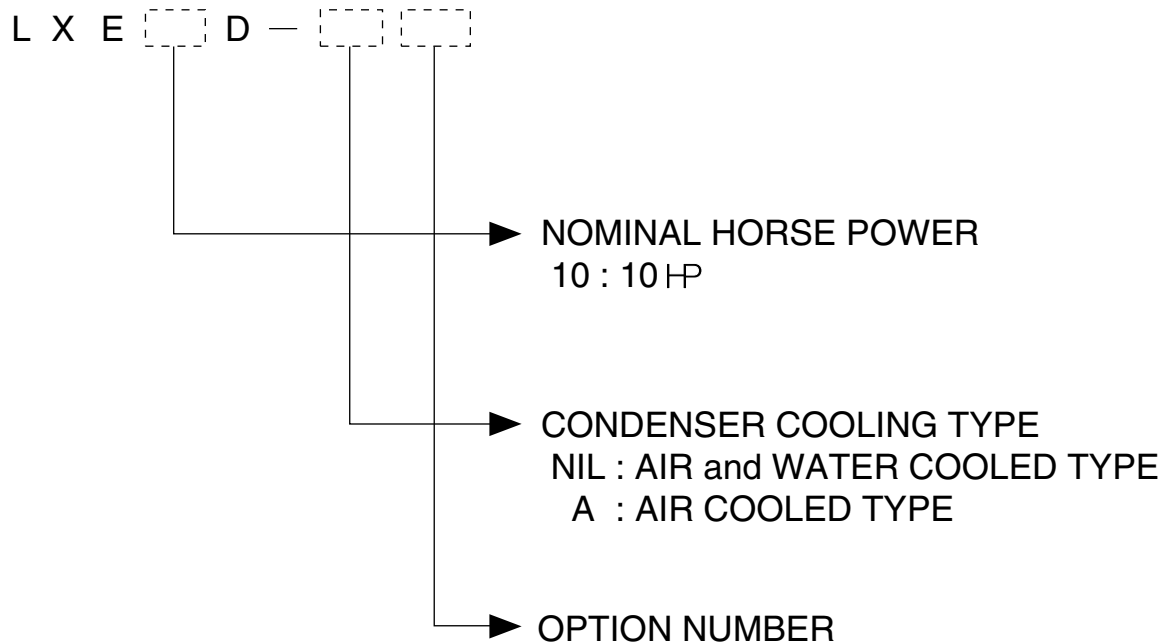
TR01-12

This manual describes only the items different from those of the standard machine.

For the items not described in this manual, refer to the following document.

- Service Guide, Services
- Service Manual (Operation)
- Parts List
- Operation Manual of Personal Computer Software
- Compressor Dismantling and Assembly Manual

Denomination of Model Name



Note) "R" GIVEN AFTER OPTION NUMBER STANDS FOR "REVISION" AND IT IS GIVEN FOR THE UNIT WHICH IS SPECIALLY MODIFIED.

CONTENTS

Chapter for operation and service work	3
1. Schematic wiring diagram	5
2. Stereoscopic wiring diagram	6
Chapter for Parts List	7

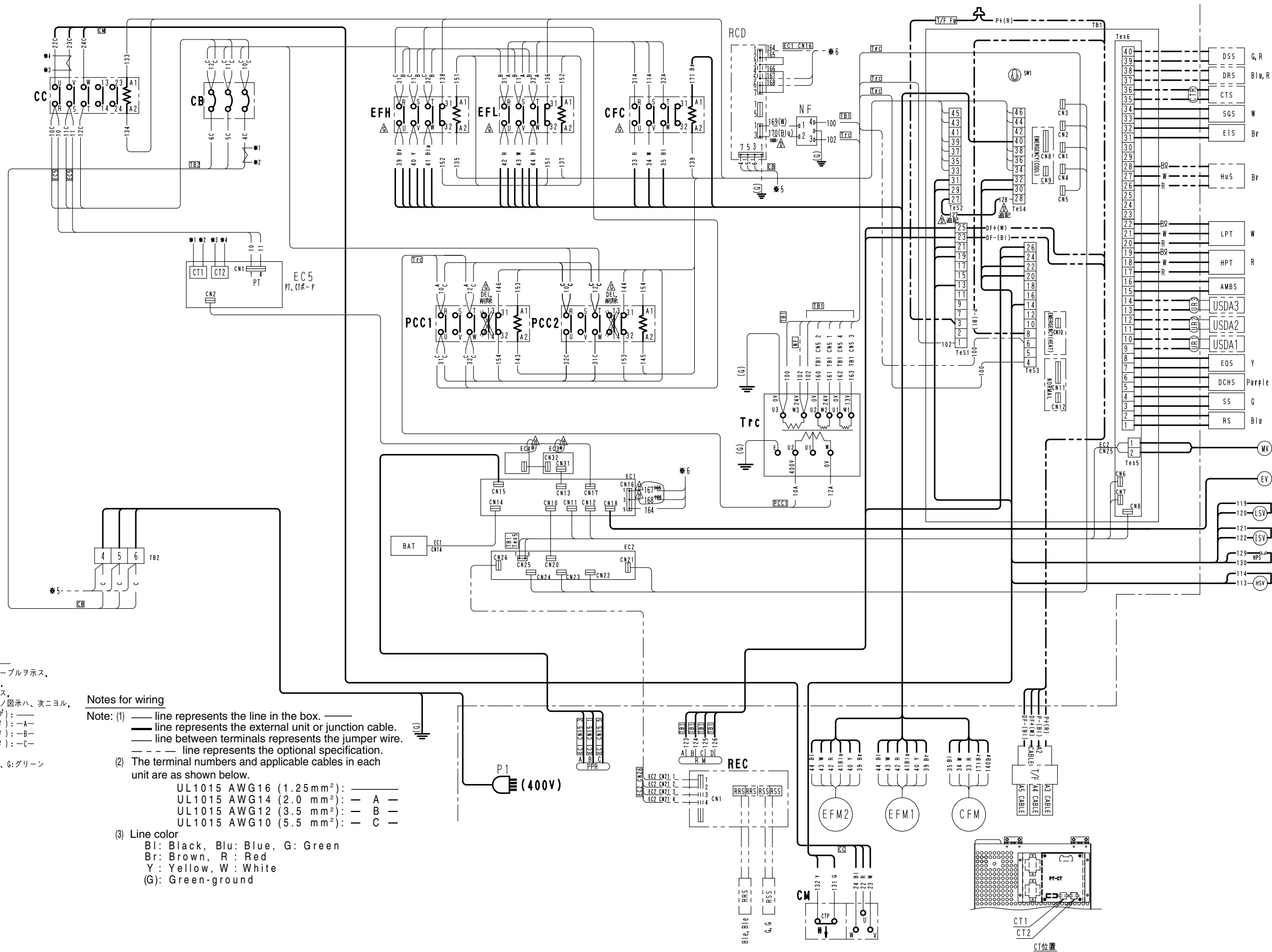
<https://daikin-p.ru>

Chapter for operation and service work

(The items which are different from that of the standard products only are described in this manual)

<https://daikin-p.ru>

2. Stereoscopic wiring diagram



配線要領

- 注) (1) 線ハ、盤内配線ヲ示ス、
 線ハ外部機器及ヒ、中継ケーブルヲ示ス、
 端子間 線ハ、短絡線ヲ示ス、
 線ハ、オプションヲ示ス、
 (2) 各機器内ノ端子番号、使用電線ノ図示ハ、次ニヨル、
 UL1015AWG16(1.25mm²): —
 // AWG14(2.0mm²): —A—
 // AWG12(3.5mm²): —B—
 // AWG10(5.5mm²): —C—
 (3) 配線色
 Bl:クロ、 Blu:アオ、 G:グリーン
 Br:チャ、 R:アカ
 Y:キ、 W:シロ
 (G):ミドリアース

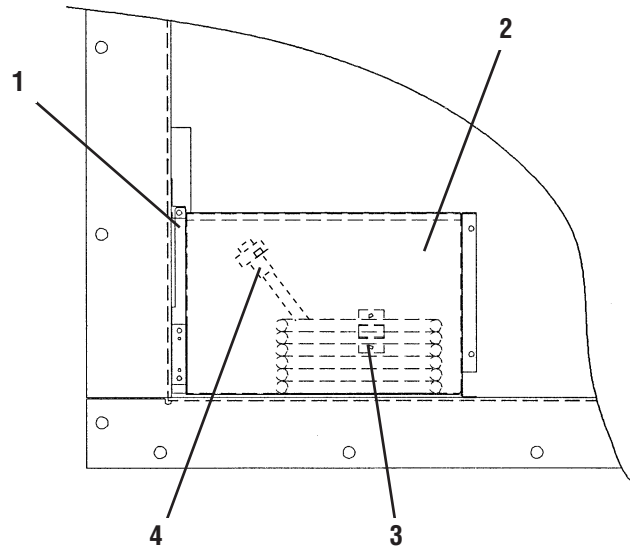
Notes for wiring

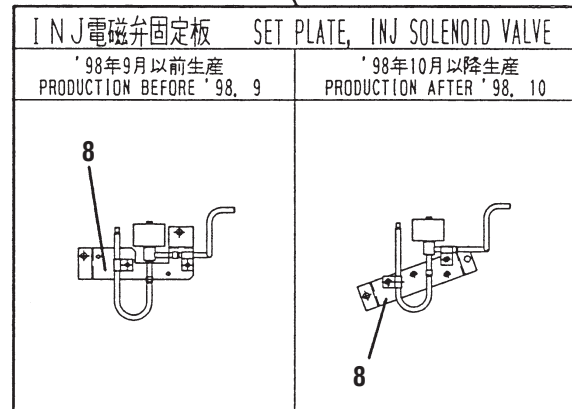
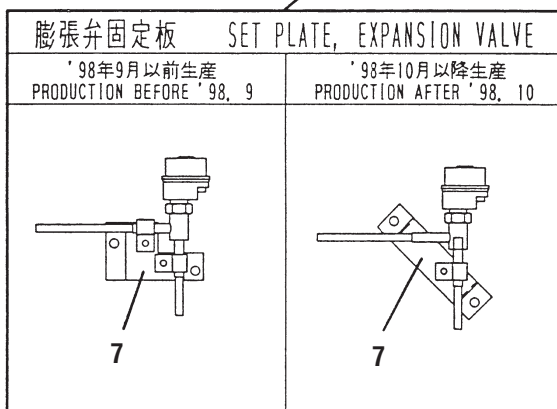
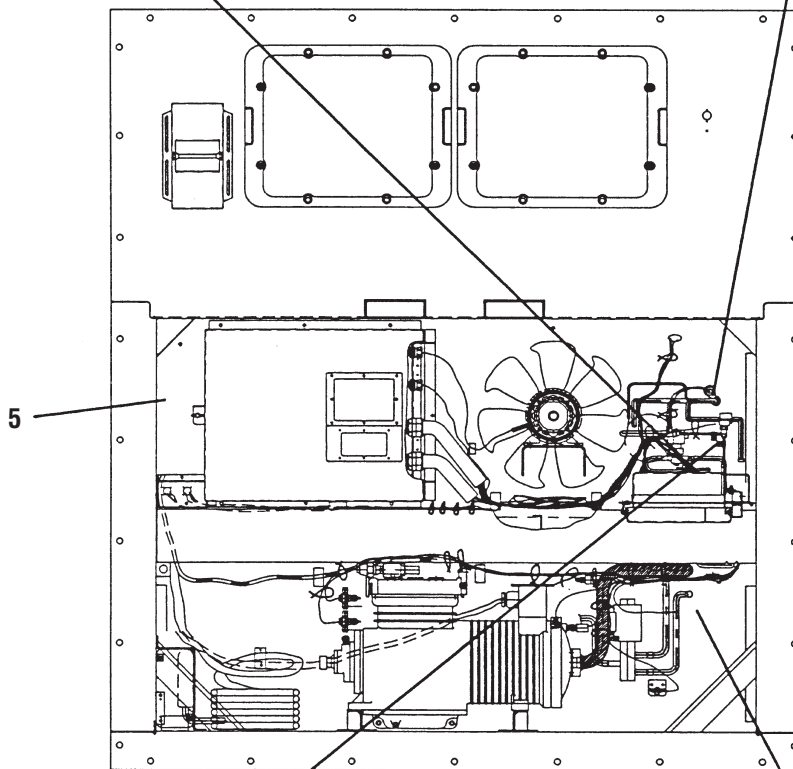
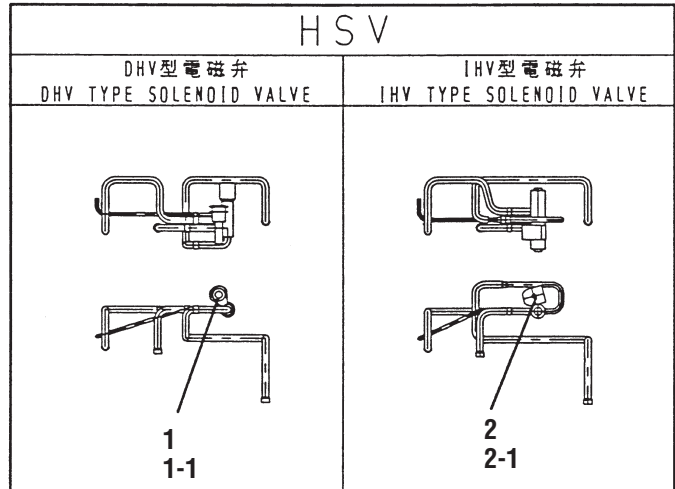
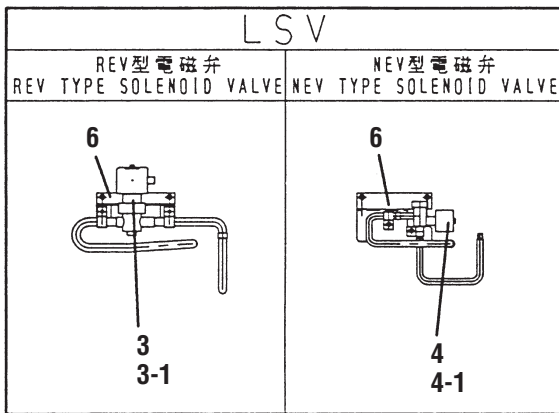
- Note: (1) — line represents the line in the box. —
 — line represents the external unit or junction cable.
 — line between terminals represents the jumper wire.
 - - - line represents the optional specification.
 (2) The terminal numbers and applicable cables in each unit are as shown below.
 UL1015 AWG16 (1.25 mm²): —
 UL1015 AWG14 (2.0 mm²): — A —
 UL1015 AWG12 (3.5 mm²): — B —
 UL1015 AWG10 (5.5 mm²): — C —
 (3) Line color
 Bl: Black, Blu: Blue, G: Green
 Br: Brown, R: Red
 Y: Yellow, W: White
 (G): Green-ground

Chapter for Parts List

(The parts which are different from that of the standard products only are described in this parts list)

The parts which are different from that of the standard model only are described in this manual. Regarding the items which are not described in this manual, refer to Parts List (TR97-11C) as well.





Parts related with the unit (outside) 2
庫外関連部品 2

a:'98年12月以前/Production before '98.12,b:'99年1月以降/Production after '99.1

NO. 符号	PARTS NO. 部品番号	PARTS NAME	部品名称	DWG. NO. 図面番号	TYPE SPECIFICATION 形式仕様	QTY/UNIT 1台当りの所要数		REMARKS 備考
						a	b	
1	0598622	Three way solenoid valve (HSV)	三方電磁弁 (H S V)	3PA11792-4	DHV-804DXF, HSV	1		BODY+COIL
1-1	0598639	Coil, three way solenoid valve	三方電磁弁コイル	3PA11792-4-KA		1		COIL ONLY
2	1074516	IHV type solenoid valve body	I H V 型電磁弁弁体	3SA52051-1	IHV0201, HSV		1	BODY ONLY
2-1	0955287	Solenoid valve coil	電磁弁コイル	3P010453-1			1	COIL ONLY
3	0598684	Refrigerant solenoid valve (LSV)	冷媒用電磁弁 (L S V)	3PA43018-3	REV-1004DXF, LSV	1		BODY+COIL
3-1	0598691	Coil, solenoid valve	電磁弁コイル	3PA43018-3-KA		1		COIL ONLY
4	0944566	NEV type solenoid valve body	N E V 型電磁弁本体	R3305118-1	NEV-803DXF, LSV		1	BODY ONLY
4-1	0955287	Solenoid valve coil	電磁弁コイル	3P010453-1			1	COIL ONLY
5	1201084	C,box front plate	C, B O X 前板 (左)	2P011329-1		1	1	

c:'98年9月以前/Production before '98.9,d:'99年1月以降/Production after '99.1

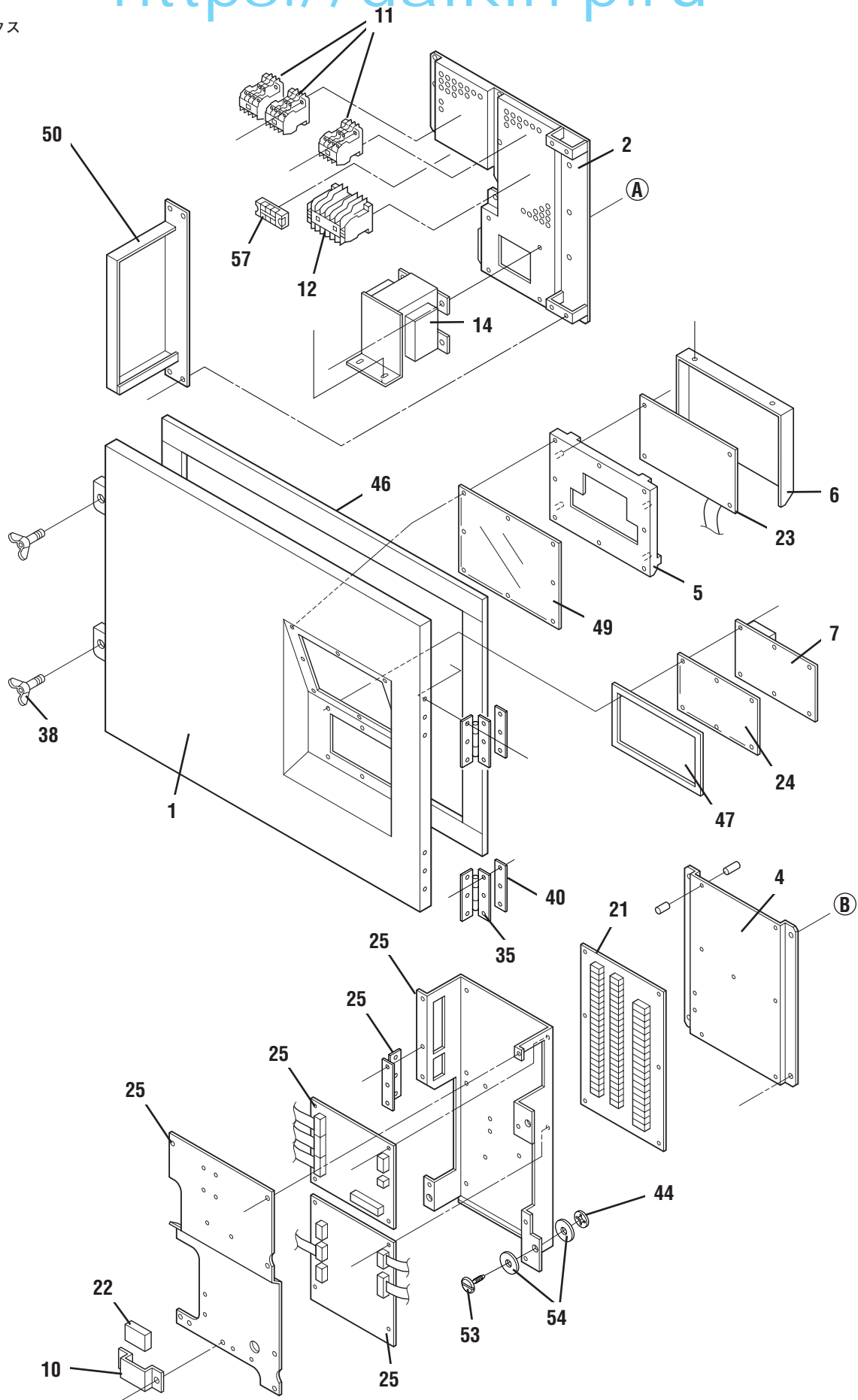
NO. 符号	PARTS NO. 部品番号	PARTS NAME	部品名称	DWG. NO. 図面番号	TYPE SPECIFICATION 形式仕様	QTY/UNIT 1台当りの所要数		REMARKS 備考
						c	d	
6		Set plate, solenoid valve	液電磁弁固定板	4P007021-1		1		
6		Set plate liquid solenoid valve	液電磁弁固定板	4P028110-1			1	

e:'98年10月から'98年12月生産/Production from '98.10 to '98.12

NO. 符号	PARTS NO. 部品番号	PARTS NAME	部品名称	DWG. NO. 図面番号	TYPE SPECIFICATION 形式仕様	QTY/UNIT 1台当りの所要数	REMARKS 備考
						e	
6		Set plate liquid solenoid valve	液電磁弁固定板	4P007021-2		1	

• When ordering the parts whose No. are not shown in the PARTS NO. column, be sure to describe DWG. NO..

• 部品番号欄が空白になっている部品は、図面番号で、指示願います。
(TR01-12)



Control box
 コントロールボックス

NO. 符号	PARTS NO. 部品番号	PARTS NAME 部品名称	DWG. NO. 図面番号	TYPE 形式	SPECIFICATION 仕様	QTY/UNIT 1台当りの所要数	REMARKS 備考
1	0991555	Control box cover welding ass'y	3P003505-1			1	
2		Set plate, control devices (1)	2P010791-2			1	
3		Set plate, control devices (2)	2P010019-1			1	
4		Mounting plate, terminal board	3P010794-1			1	
5	1142154	Plate, label	3P003753-1			1	
6	1140165	Cover, display board	3P005734-1			1	
7	1140141	fixing plate, sheet key	4P003547-1			1	
8		Fixing plate, PC port	4P009422-1			1	
9	1270004	Protection plate, barker	4P010500-1			1	
10	1241138	Fixing plate, battery	4P010920-1			1	
11	617584	Magnetic contactor (EFH, L, CFC 1, 2)	3PA10849-3	CLK15H31-P4L		3	
12	0444338	Magnetic contactor (PCC)	3SA42279-3	RSK-11H-P4L		1	
13	617583	Magnetic contactor (CC)	3PA10848-1	CLK50H-P8AL		1	
14	0598723	Transformer (TrC)	3PA50525-1	PT10-235VA		1	
16	0432986	Circuit breaker (CB)	3PA42438-1	30A		1	
17	0991531	PC port connector	3P010803-1			1	
18	1270011	Personal computer port cover	3P010805-1			1	
19	664515	Monitoring receptacle (RM)	4PA19072-1	RM-W4009P-10		1	
20	0954633	PT and CT board	2P010906-3			1	
21	0954626	Terminal board	2P010882-1			1	
22		Alkaline battery	4PA61681-1-KI	6LR61相当品		1	
23	0954602	Indication sheet	2P010368-1			1	
24	0954570	Membrane switch	2P010363-1			1	
25	1075526	Controller ass'y	3P015006-9			1	
27	0758640	Cable gland	3PA37599-5	SCL-14A		2	
28	0758626	Cable gland	3PA37599-6	SCL-14B		2	
29	0758657	Cable gland	3PA37599-7	SCL-18A		1	

• When ordering the parts whose No. are not shown in the PARTS NO. column, be sure to describe DWG. NO..

• 部品番号欄が空白になっている部品は、図面番号で、指示願います。
 (TR01-12)

Control box
コントロールボックス

NO. 符号	PARTS NO. 部品番号	PARTS NAME	部 品 名 称	DWG. NO. 図面番号	TYPE 形 式	SPECIFICATION 仕 様	QTY/UNIT 1台当りの所要数	REMARKS 備 考
32	0758657	Cable gland	電線グラウンド	3PA37599-7	SCL-18A		1	
33	1267642	Flexible tube connector	フレキシブル管用コネクタ	4P010926-6			2	
34		Flexible conduit	フレキシブル電線管	3P010927-61			2	
35	1140127	Hinge, control box cover	平蝶番(コントロールボックス蓋)	4P005339-1			3	
36	351229	Hinge	平蝶番	R4717632-1			2	
37	860011	Speed bolt	スピードボルト	R4714824-1			4	
38	1170065	Wing bolt, control box cover	蝶ボルト(コントロールボックス蓋)	4P010750-1			2	
40	1238721	Plate nut	当板ナット	4P010116-1			2	
41	860015	Universal nut	自在ナット	R4713188-1			6	
42	1267673	Plate nut, control box cover	プレートナット(コントロールボックス蓋)	4P010869-1	ウイットネジ W1/2-12		2	
43	860005	Washer, speed bolt	スピードボルト用座金	R4713334			12	
44	840002	Drop out prevention washer	脱落防止座金	R4718607-6			6	
45	1267419	Plate nut hold plate	プレートナット押工板	4P010870-1			2	
46	1136469	Rubber gasket	パッキン (C. BOX蓋)	4P003732-1			1	
47	1140134	Packing, membrane switch panel	パッキン (シートキー)	4P010875-1			1	
48		Dripproof cover	防滴カバー	4P004324-1			1	
49	1140158	Access window	点検窓	4P003702-1			1	
50		Blind plate (without modem)	仕切板 (モデムなし)	3P011525-1			1	
53	860031S	Speed bolt	スピードボルト	R4714824-3			2	
54		Polycarbonate plane washer	ポリカーボネート平座金	4SK07302-10			2	
55		Protection rubber	保護用ゴム	4P012318-1			2	
56	537326	Drain tube	ドレンチューブ	R4716594-1			2	
57	660111	Terminal block	端子台	R3421183-2			1	
58	1267705	Packing, control box front panel	パッキン(コントロールボックス前板)	4P011315-1			1	

• When ordering the parts whose No. are not shown in the PARTS NO. column, be sure to describe DWG. NO..

• 部品番号欄が空白になっている部品は、図面番号で、指示願います。
(TR01-12)

